

MARIN LOCAL AGENCY FORMATION COMMISSION

RESOLUTION NO. 20-02

RESOLUTION REAFFIRMING THE SPHERE OF INFLUENCE OF  
MARINWOOD COMMUNITY SERVICES DISTRICT

**WHEREAS** upon determination and adoption of a sphere of influence, the Marin Local Agency Formation Commission is required to periodically review and update adopted spheres of influence for each city and special district not less than once every five years within Marin County under Government Code Section 56425 (g); and

**WHEREAS** the Executive Officer has conducted a review of the adopted sphere of influence of local government agencies in the San Rafael area, prepared a summary, *San Rafael Regional Municipal Service Review*, including his recommendations thereon, the summary having been presented to and considered by this Commission; and

**WHEREAS** a public hearing by this Commission was held on the *San Rafael Regional Municipal Service Review and Sphere of Influence* and staff's recommendations contained in that report on the date and at the time noticed thereof, and at the hearing this Commission heard and received all oral and written testimony, objections and evidence which were made, presented or filed, and all persons present were given an opportunity to hear and be heard with respect to the proposal and the Executive Officer's report.

**NOW, THEREFORE**, based upon the information contained in the Executive Officer's report, correspondence from affected agencies and information received during the public hearings, the Marin Local Agency Formation Commission **DOES HEREBY RESOLVE, DETERMINE AND ORDER** as follows:

Section 1. The sphere of influence of the Marinwood Community Services District is hereby reaffirmed without change as shown on Exhibit A attached hereto and incorporated herein by reference and the Commission makes the written determinations pursuant to Government Code section 56425(e) as provided for in Exhibit B attached hereto and incorporated herein by reference.

Section 2 Pursuant to Section 15061(b)(3) of the State CEQA Guidelines, the Commission finds that this review and reaffirmation of the sphere of influence of the Marinwood Community Services District is exempt from the provisions of the California Environmental Quality Act because it can be seen with certainty that there is no possibility that the activity in question may have a significant effect on the environment.

Section 3. The Executive Officer is hereby directed to mail copies of this resolution to affected local government agencies in the San Rafael area.

Vincent's/Silveira from the sphere of influence of the City of San Rafael is based on isolation of these areas from the City's existing public safety facilities and limited street access between these areas and the existing incorporated area of the City of San Rafael and on the continuing availability of municipal services from the County of Marin, County Service Areas #13, #19 and #31, Marinwood Community Services District, Marin Municipal Water District and the Las Gallinas Valley Sanitary District.

- 4) The existence of any social or economic communities of interest in the area if the commission determines that they are relevant to the city.
  - Each of the unincorporated areas in the designated sphere is served by the same school districts and other community organizations that serve the incorporated area. Recreational and cultural programs offered by the City of San Rafael are open to, and are patronized by, unincorporated area residents. Recreational and cultural programs offered by Marinwood Community Services District and St. Vincent's School are also attended by residents of the City of San Rafael and other cities and unincorporated area residents.
- 5) For an update of a sphere of influence for a city that provides public facilities or services related to sewers, municipal and industrial water, or structural fire protection, that occurs on or after July 1, 2012, the present and probable need for those public facilities and services of any disadvantaged unincorporated communities within the existing sphere of influence.
  - There are no unincorporated communities within the Study Area that have been identified as disadvantaged.

**PASSED AND ADOPTED** by the Marin Local Agency Formation Commission, on February 13, 2020, by the following vote:

AYES: McEntee, Murray, Coler, Kious, Connolly, Arnold, Loder

NOES: None

ABSTAIN: None

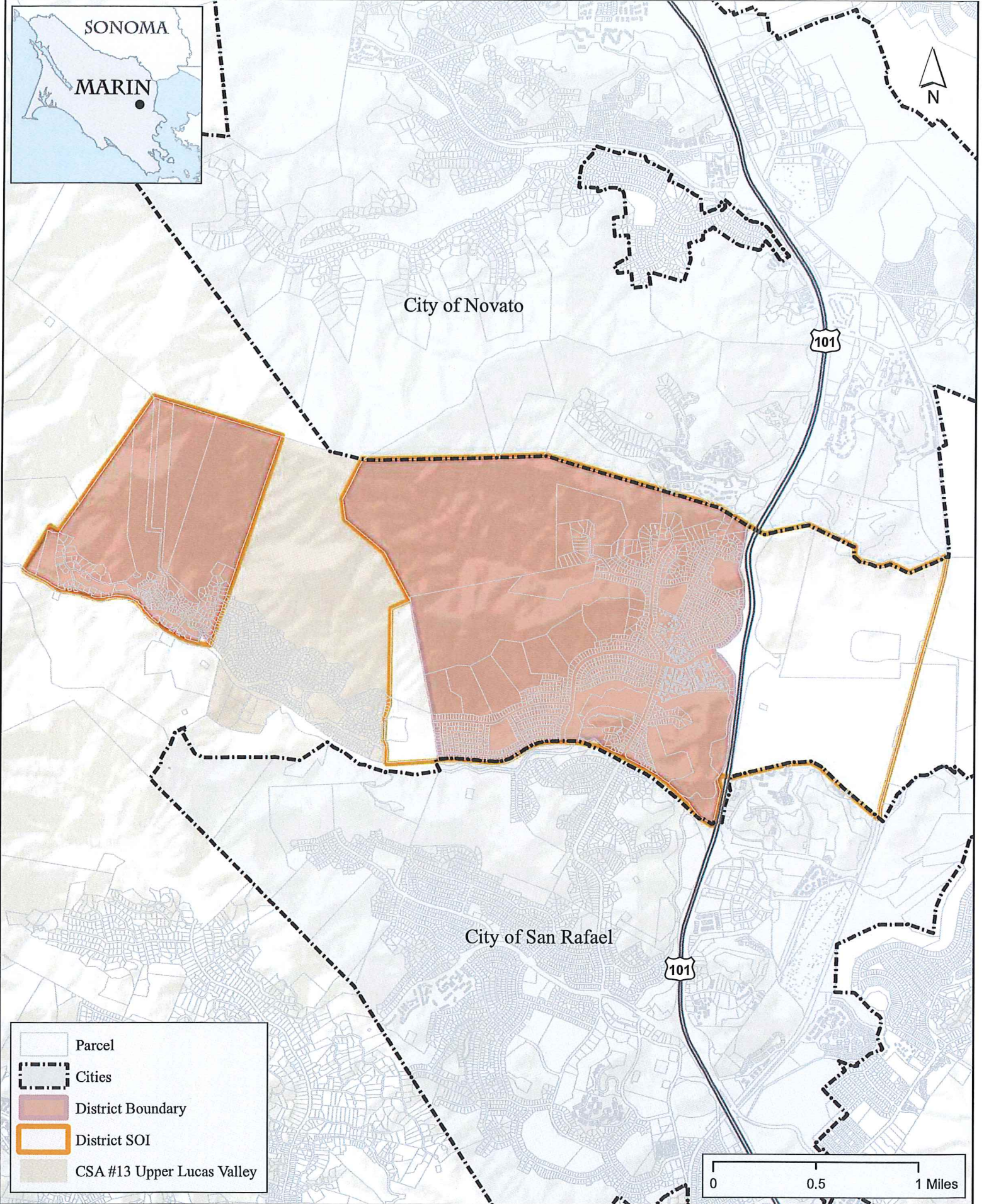
ABSENT: None



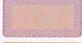


Sashi McEntee  
 Sashi McEntee, Chair  
 Marin LAFCo

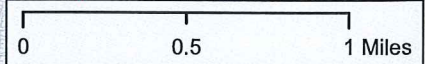
**ATTEST:**  
Jason Fried  
 Jason Fried, LAFCO Executive Officer

**APPROVED AS TO FORM:**  
Malathy Subramanian  
 Malathy Subramanian, LAFCo Counsel

- Attachments to Resolution No. 20-02
- a) Exhibit A - Map
  - b) Exhibit B - Determinations



-  Parcel
-  Cities
-  District Boundary
-  District SOI
-  CSA #13 Upper Lucas Valley



# Marinwood Community Services District

Figure 6-1

## EXHIBIT B

### MARINWOOD COMMUNITY SERVICES DISTRICT SPHERE OF INFLUENCE DETERMINATIONS

#### GOVERNMENT CODE SECTION 56425

- 1) The present and planned land uses in the area, including agricultural and open-space lands.
  - Present and planned land uses in the area designated as the sphere of influence of the Marinwood Community Services District include low and medium density residential, agricultural, open space and conservation uses.
- 2) The present and probable need for public facilities and services in the area.
  - Areas included in the Marinwood Community Services District sphere of influence are sufficient to provide service to the area within the designated district sphere of influence.
- 3) The present capacity of public facilities and adequacy of public services that the agency provides or is authorized to provide.
  - The facilities and services provided by the Marinwood Community Services District are sufficient to provide service to the area within the designated district sphere of influence.
- 4) The existence of any social or economic communities of interest in the area if the commission determines that they are relevant to the city.
  - The Commission has determined that social and economic communities of interest between areas currently within the boundaries of the Marinwood Community Services District and the area surrounding its jurisdiction are not relevant to the determination of the District's sphere of influence.
- 5) For an update of a sphere of influence for a city that provides public facilities or services related to sewers, municipal and industrial water, or structural fire protection, that occurs on or after July 1, 2012, the present and probable need for those public facilities and services of any disadvantaged unincorporated communities within the existing sphere of influence.
  - There are no unincorporated communities within the Study Area that have been identified as disadvantaged.